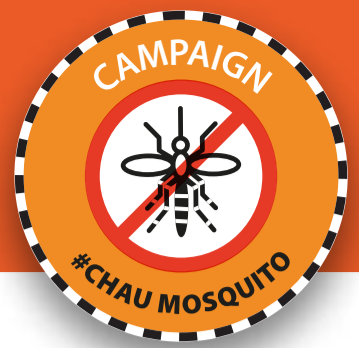





# TO PREVENT DENGUE AND CHIKUNGUNYA CONTAGION



## Let's meet the mosquito *Aedes aegypti*

-  The *Aedes aegypti* mosquito is domiciliary, it is close to where people gather and live. It does not travel long distances. That's why in general their breeding sites are in houses or in their surroundings.
-  It prefers humid and shady places, does not like clarity or sun and conveniently uses the vegetation to shelter and feed.
-  It flies close to the ground and usually stings on the lower legs, calves and ankles.
-  The female is most active in the morning and at sunset. It prefers to sting the moments when we are sitting quietly and enjoying ourselves.
-  During its life it stings several times and when doing so, if she is a carrier of viruses, then she transmits them to us.
-  It places its eggs on the walls of different containers that can be filled with water. Prefers containers with still water and, where possible, the clean type.

**LET'S ERADICATE *Aedes aegypti* MOSQUITO  
BREEDING SITES.**